
Installation & User Manual of BrowsePlus

Manual for BrowsePlus

MetaDesign Solutions

Contents

1. Introduction	3
1.1. Features	3
1.1.1. Supported Environment	3
1.1.2. Minimum System Requirements	3
1.1.3. Cost	4
2. Installation Steps for BrowsePlus	4
3. Usage Instructions	5
3.1. Set Preferences	5
3.2. Launch New Browser	5
3.3. Open New Tabs	6
3.4. Drag and Drop Images	7
3.5. Search for Images	7
3.6. Drag and Drop Text	8
3.7. Bookmark and Favorites	9
3.8. Limitation in Demo	9

1. Introduction

BrowsePlus integrates tab based browsing facility with InDesign. Apart from other functionalities BrowsePlus has emerged as an excellent tool to integrate InDesign with Web Content Management Systems.

1.1.Features

- a. Excellent tool to integrate web CMS with Indesign
- b. Facilitate tab based internet and folder browsing
- c. Perform drag n drop of images and text efficiently and quickly
- d. Search related images on internet for selected text
- e. Perform Goggle search for selected text
- f. Facilitate all functionalities of a browser window in InDesign
- g. Store all images dropped in one centralized location
- h. Manage bookmarks and favorites
- i. Saves significant time while doing routine Indesign

1.1.1. Supported Environment

- a. Operating System
 - i. Windows 2000
 - ii. Windows XP
 - iii. Windows Vista
 - iv. Mac OS-X 10.5 & Higher
- b. InDesign Versions Supported
 - v. InDesign CS2
 - vi. InDesign CS3
 - vii. InDesign CS4

1.1.2. Minimum System Requirements

- a. Windows 2000/XP/Vista/Mac OSX
- b. InDesign Version CS3/CS4/CS5/CS5.5
- c. Internet Explorer 6 or 7

1.1.3. Cost

Product	Description	No. Of Licenses	Price in USD
BrowsePlus	Internet, File and FTP Browsing in Indesign	upto 3	49.99 USD
		3 to 5	42.99 USD
		5 to 10	37.99 USD
		Above 10	32.99 USD

2. Installation Steps for BrowsePlus

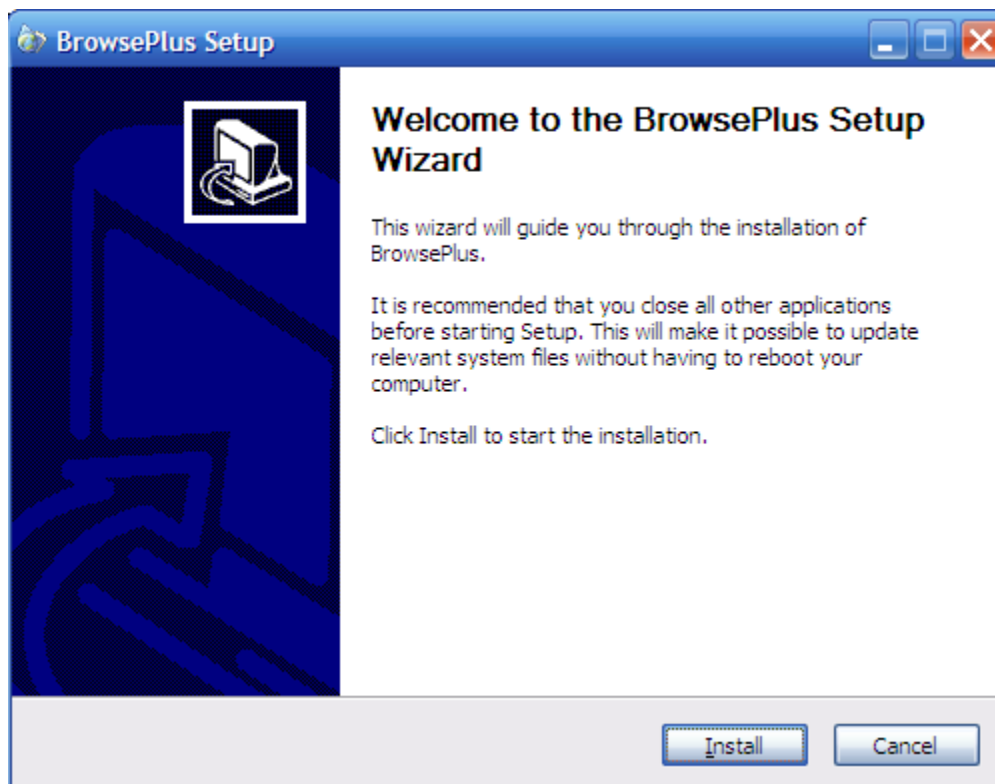
STEP 1 : Download

Download Installer from our website or using the following url

<http://metadesignsolutions.com/products/downloads.php>

STEP 2 : Install

Start the installer by either double clicking you mouse pointer or select and press enter key



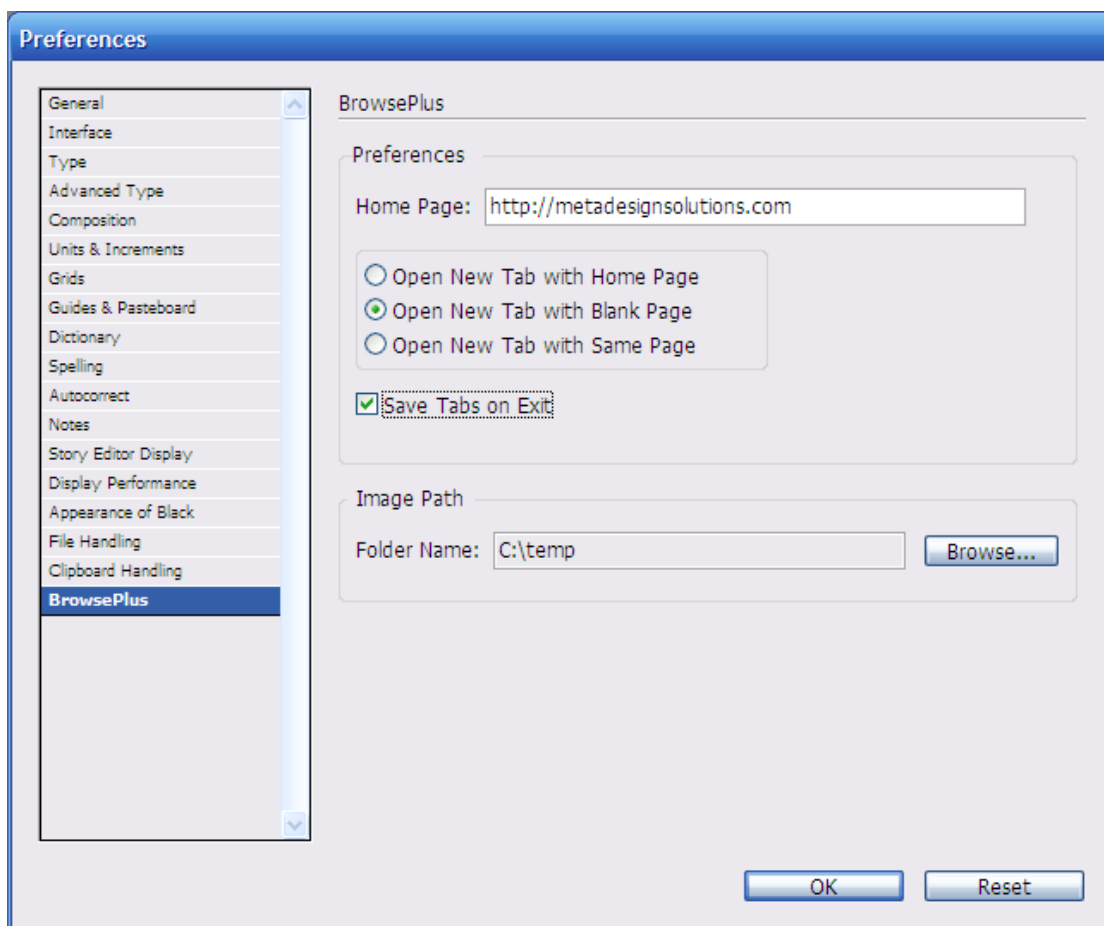
STEP 3 : Launch InDesign

Your Installation is complete, now launch you Indesign Application to start using BrowsePlus

3. Usage Instructions

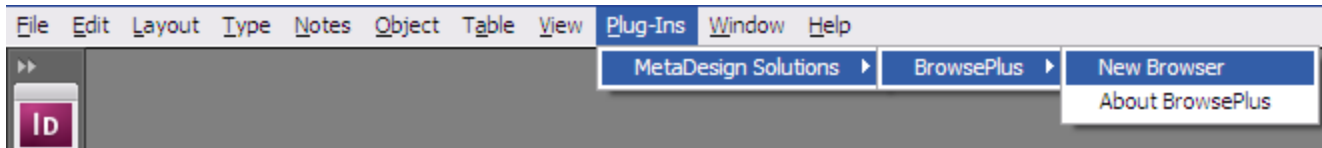
3.1. Set Preferences

- Go to Edit Menu → Select Preferences → Select BrowsePlus
- Set your Home Page to “about:blank”
- Set Image Path to a folder all drop Images will be stored



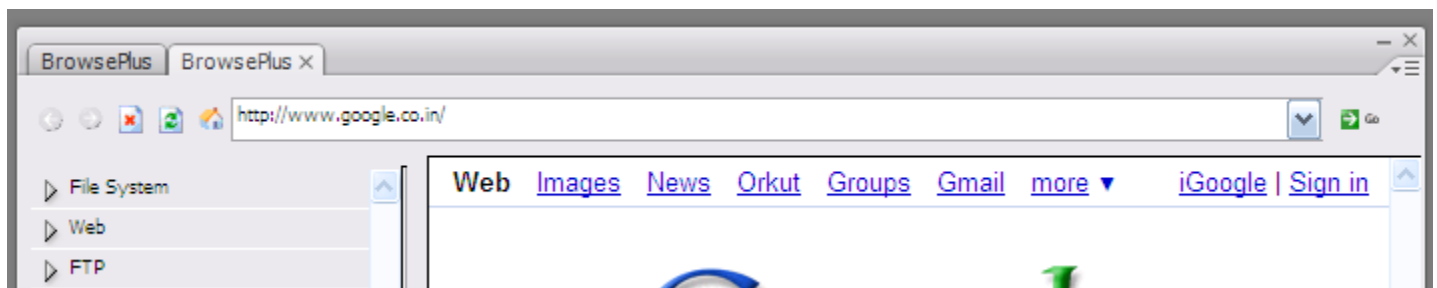
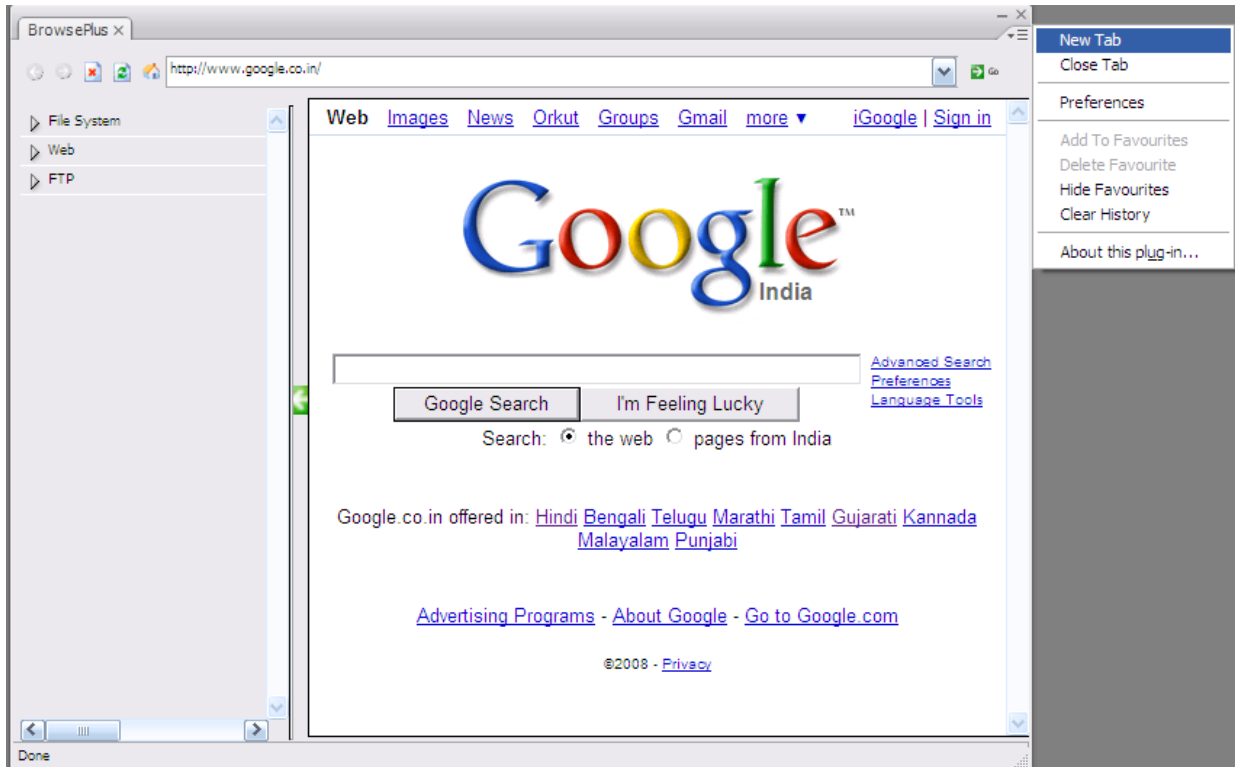
3.2. Launch New Browser

- Go to Plug-Ins Menu → MetaDesign Solutions → BrowsePlus → New Browser



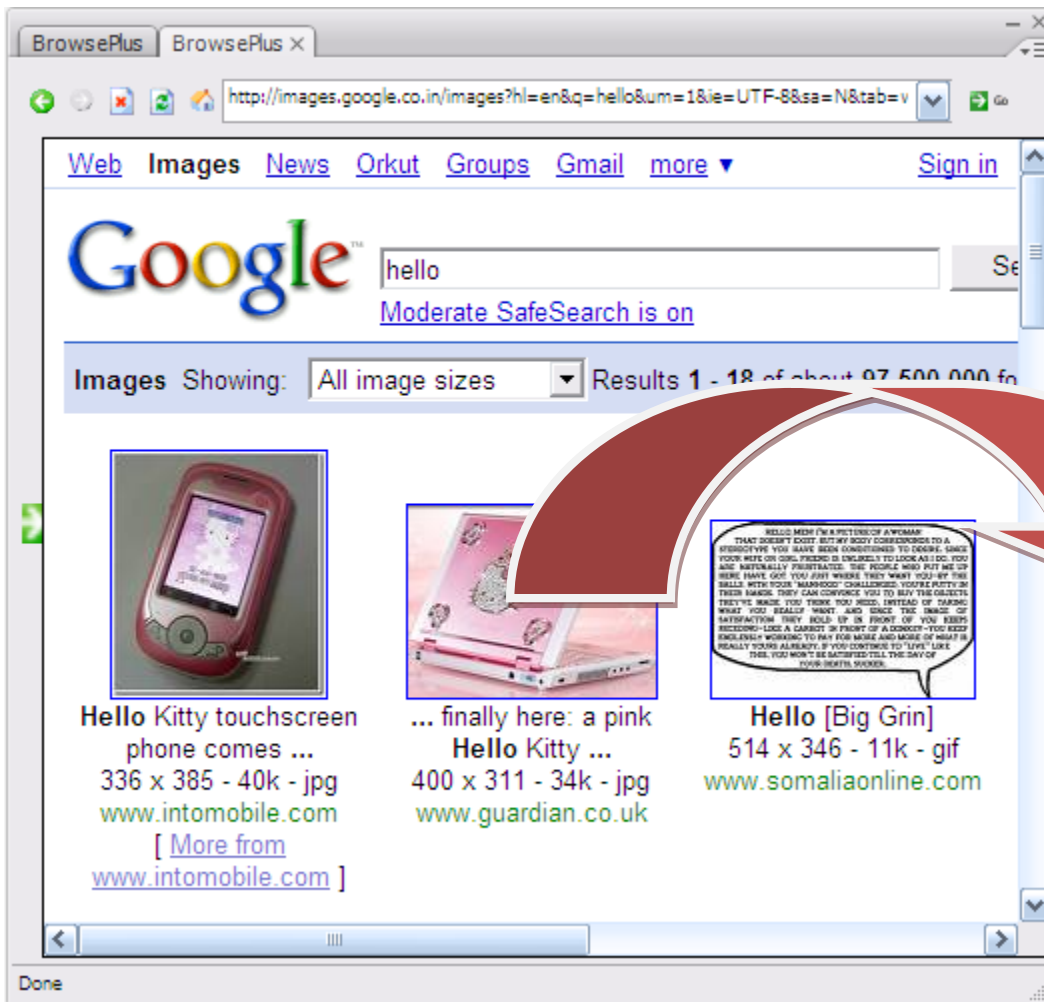
3.3. Open New Tabs

- a. Choose "New Tab" on Indesign Palette Flyout Menu



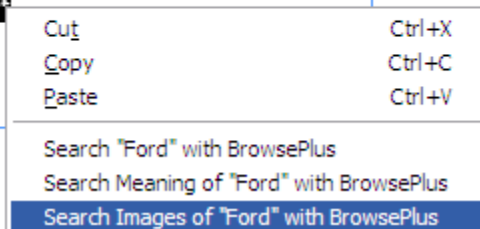
3.4. Drag and Drop Images

- a. Drag and Drop Images from any web page to InDesign Document

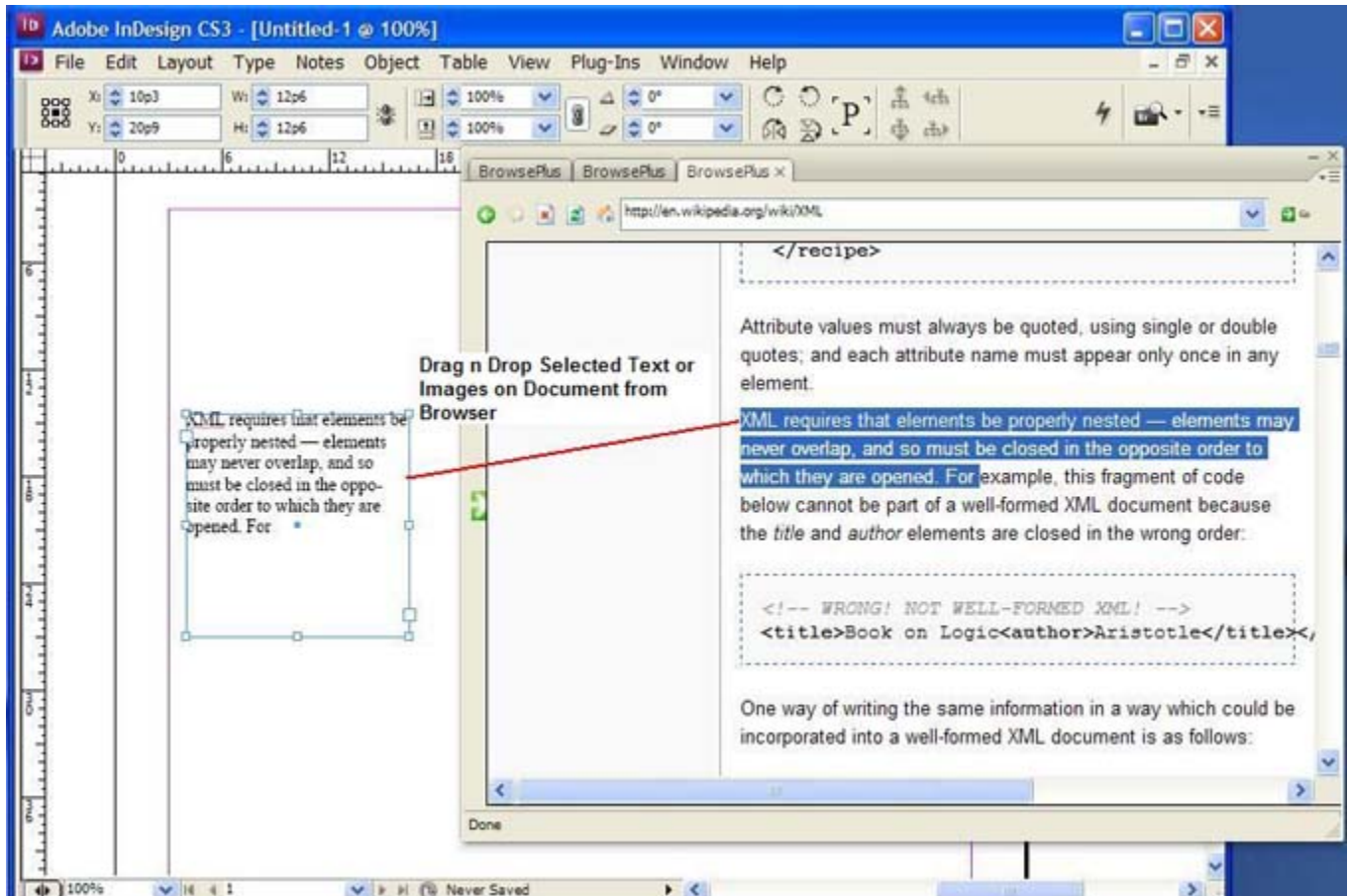


3.5. Search for Images

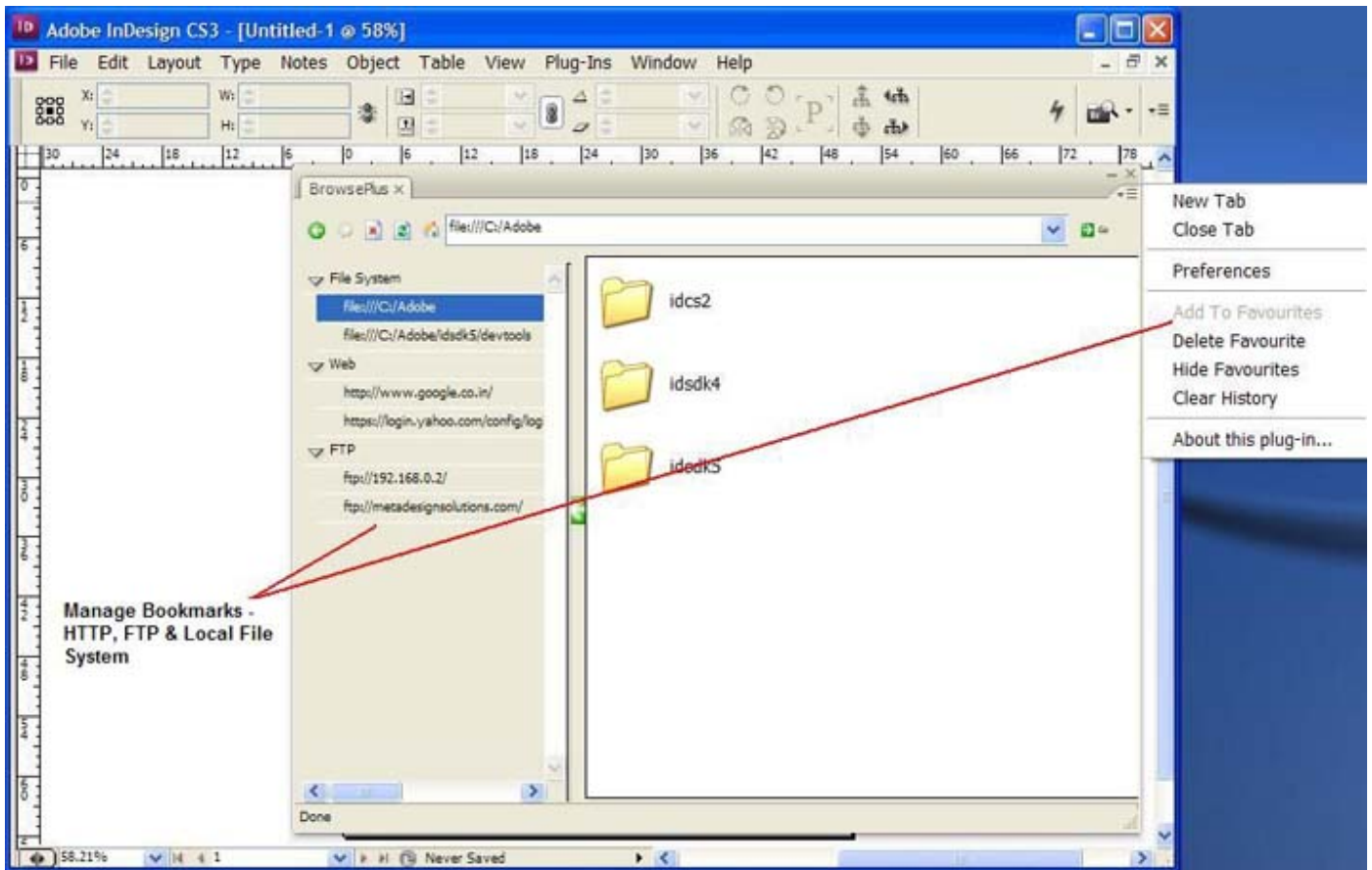
Welcome to BrowsePlus. You can search for Images on Google matching selected text. Ex. **Ford**



3.6. Drag and Drop Text



3.7. Bookmark and Favorites



3.8. Limitation in Demo

Demo Plug-in of BrowsePlus can be used for only a maximum number of 5 Minutes. For the first 5 Minutes, all functionality of BrowsePlus is active